



TRES

Design | Kevin Boland



CHARACTERISTICS

Contemporary | Minimal | Versatile

DESIGN

Tres is our take on a classic table design. Combining powder coated aluminium legs with High Pressure Compact Laminate top slats - extremely durable, impact and moisture resistant as well as anti-bacterial. Perfect for those long alfresco lunches with family and friends.

CUSTOMISATION

Choose from a curated palette of OHMM HPCL slats and powder coat pairings to style it your way.

PAIRING

Designed to pair well with all OHMM chair collections.

HANDCRAFTED

Lovingly handcrafted in-house using only the best-in-class materials by OHMM Manufacturing, Cebu, Philippines - home to the world's best woven craftsmen. A little known secret.

WARRANTY

All OHMM woven products come with a 5 year worry free warranty against defective materials and workmanship. See our Warranty Info Sheet for detailed coverage.

TRES

Dining Table 6 Seater



Dining Table 8 Seater



Suggested Colourways

LIGHT

HPCL Slats Powder Coat



Marble

+



White

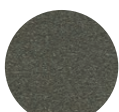
INDUSTRIAL CHIC

HPCL Slats Powder Coat



Slate

+



Taupe

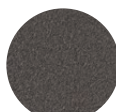
INDUSTRIAL CHIC

HPCL Slats Powder Coat



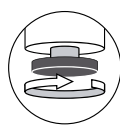
Slate

+

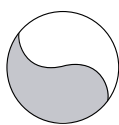


Asteroïd

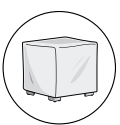
Gliders & Covers



Adjustable
Gliders



Combine Well
OHMM Chairs



Optional
Covers

Learn More

For more information please visit www.ohmm.sg or www.ohmm.ph